

Restore Missing Network Devices In Windows Explorer 10

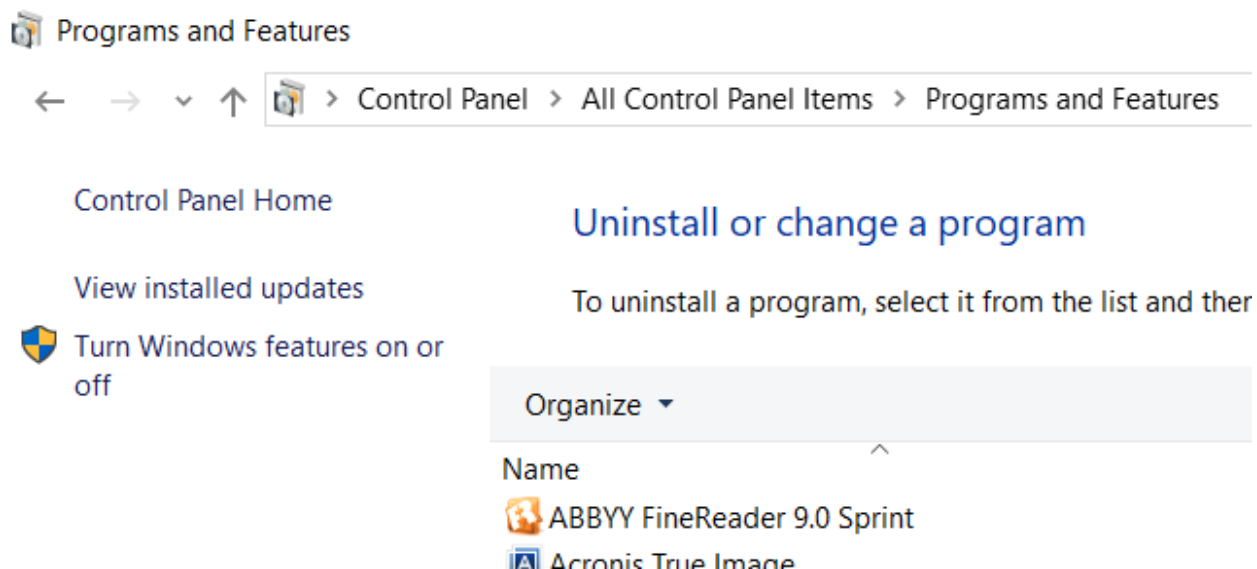
If the network devices stop displaying under Network on the left hand list in Windows Explorer 10 even though they show under network on the right, check for SMB features in Windows Settings. SMB stands for Server Message Block and the following is a description from Microsoft:

The Server Message Block (SMB) protocol is a network file sharing protocol that allows applications on a computer to read and write to files and to request services from server programs in a computer network. The SMB protocol can be used on top of its TCP/IP protocol or other network protocols. Using the SMB protocol, an application (or the user of an application) can access files or other resources at a remote server. This allows applications to read, create, and update files on the remote server. It can also communicate with any server program that is set up to receive an SMB client request.

Process

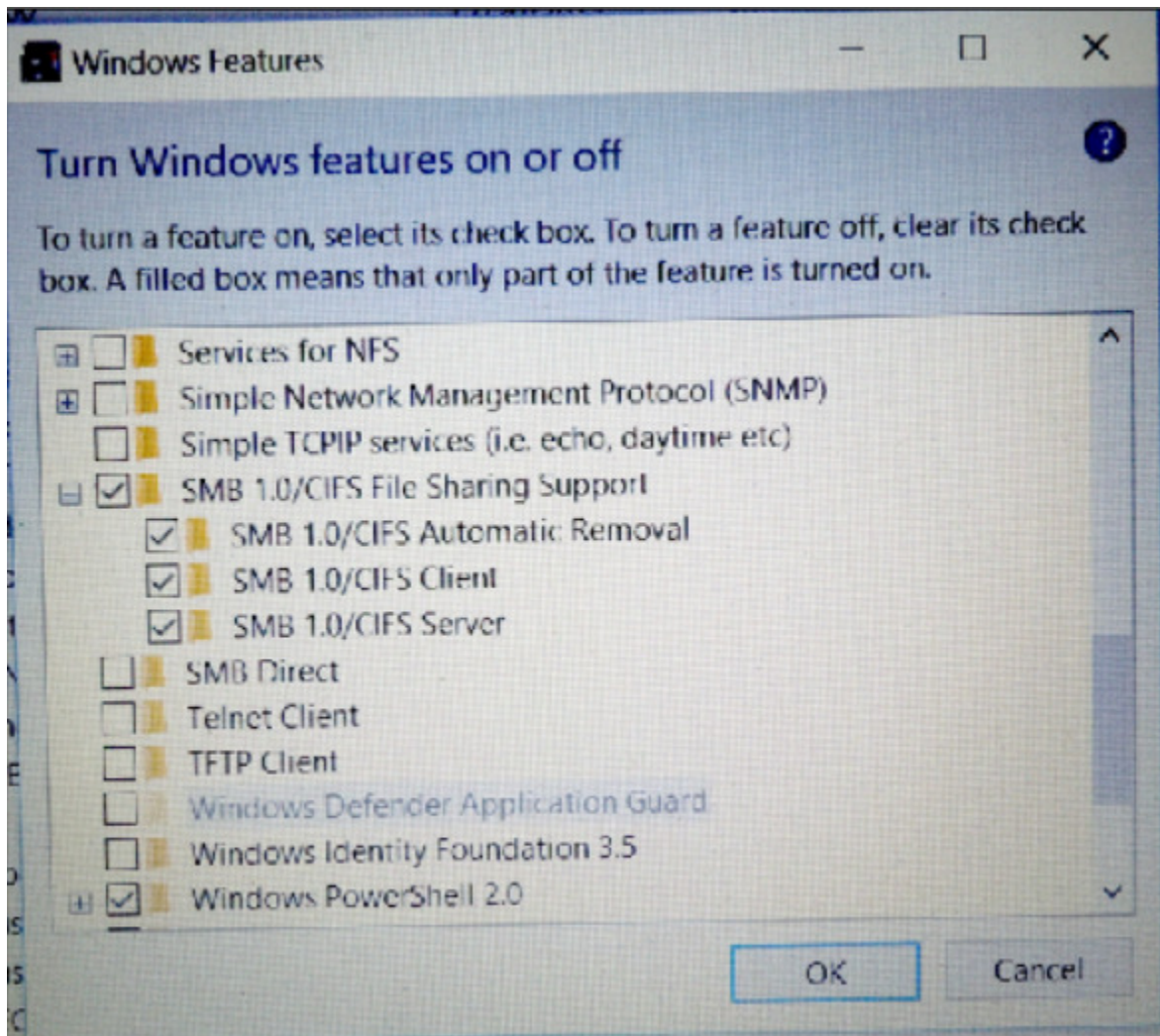
If the network devices do not appear in Windows explorer, proceed with the following steps:

In the Control Panel go to Programs and Features then select turn Windows features on and off.



Go to the feature SMB 1.0/CIFS File Sharing Support and expand to see all windows. In the case where the problem in Windows Explorer existed, the box for SMB 1.0/CIFS Client was not checked.

Check all three boxes as shown below.



Restart the computer. It will install the feature and update the operating system. The drives should then appear as shown:

- ▼ Quick access
 - Desktop
 - Documents
 - Downloads
 - Pictures
 - MDNAS02
 - MDNAS03
 - Logitech Media Server [pissarom]
- ▼ Desktop
 - > OneDrive
 - > Tom Perazella
 - > This PC
 - > Libraries
 - > TP Local USB 1 (H:)
- ▼ Network
 - > MDNAS02
 - > MDNAS03
 - > PISSAROM
 - > TOMLAPTOP2
 - > Homegroup
 - > Control Panel
 - Recycle Bin

Name	Type
▼ Folders (7)	
3D Objects	System Folder
Desktop	System Folder
Documents	System Folder
Downloads	System Folder
Music	System Folder
Pictures	System Folder
Videos	System Folder
▼ Devices and drives (5)	
Local Disk (C:)	Local Disk
Recovery (D:)	Local Disk
DVD RW Drive (E:)	CD Drive
HP_TOOLS (G:)	Local Disk
TP Local USB 1 (H:)	Local Disk
▼ Network locations (6)	
FIOS_TV_F45FD41D4...	Media Server
FIOS_TV_F45FD414D...	Media Server
FIOS_TV_F45FD414E...	Media Server
FIOS_TV_F45FD4275...	Media Server
MDNAS02	Media Server
MDNAS03	Media Server